

Accommodation Centers

Venue Cluster: The Olympic Village

Access to Olympic Venues

Venue:
Olympic Village

Transportation Corridor:
Peninsula



Transit connections to attend events, concerts, site seeing and other cultural events during the Olympic Games:
24-hour express bus services to San Francisco.

Shuttle to VTA Light Rail service to downtown San Jose and connections to Caltrain.

Caltrain service to Stanford, downtown San Francisco, and downtown San Jose.

Shuttle service to the Shoreline Amphitheater coinciding with entertainment events.

Olympic Family Transportation
All athlete and officials vehicles are under CHP escort for practice and competition.

Legend

- Olympic Family Access
- Spectator Shuttle Access
- Spectator Walk Access
- Freeway
- Highway
- Existing Rail Transit Line
- Proposed Rail Transit Line
- Rail Transit Station



Venue:
The Olympic Village

See legend above

Venue Cluster: Stanford University



Venues:

- Stanford Stadium
- Avery Aquatic Center
- Intramural West
- Maples Pavilion
- Olympic Swimming and Diving Complex
- Sunken Diamond

Sports:

- Olympic Stadium**
- Athletics
- Maples Pavilion**
- Badminton
- Modern Pentathlon – Fencing
- Modern Pentathlon – Shooting
- Olympic Swimming and Diving Complex**
- Diving

- Modern Pentathlon – Swimming
- Swimming
- Synchronized Swimming

Sunken Diamond

- Modern Pentathlon – Equestrian
- Modern Pentathlon – Running
- Softball – Primary

Stanford Softball Field

- Softball – Secondary

Other Events:

- Sponsor Hospitality Village**
- Olympic Stadium**
- Opening Ceremonies
- Closing Ceremonies

Transportation Corridor:

- Peninsula

Access to Olympic Venues



Legend

- Olympic Family Access
- Spectator Shuttle Access
- Spectator Walk Access
- Freeway
- Highway
- Existing Rail Transit Line
- Proposed Rail Transit Line
- Rail Transit Station

Spectator Transportation System:

Caltrain Stations:
Stanford, Palo Alto and California

Venue Access:

- Stanford Stadium – Walk access
- Palo Alto and California – Walk, bike access or bus shuttle
- Park-n-Ride with shuttle access

Olympic Family Transportation

(All athlete and official vehicles are proposed to be under CHP escort)

Access from Village:

US 101 N to Oregon Expressway to El Camino Real :: El Camino Real to Stanford

Access from downtown San Francisco:

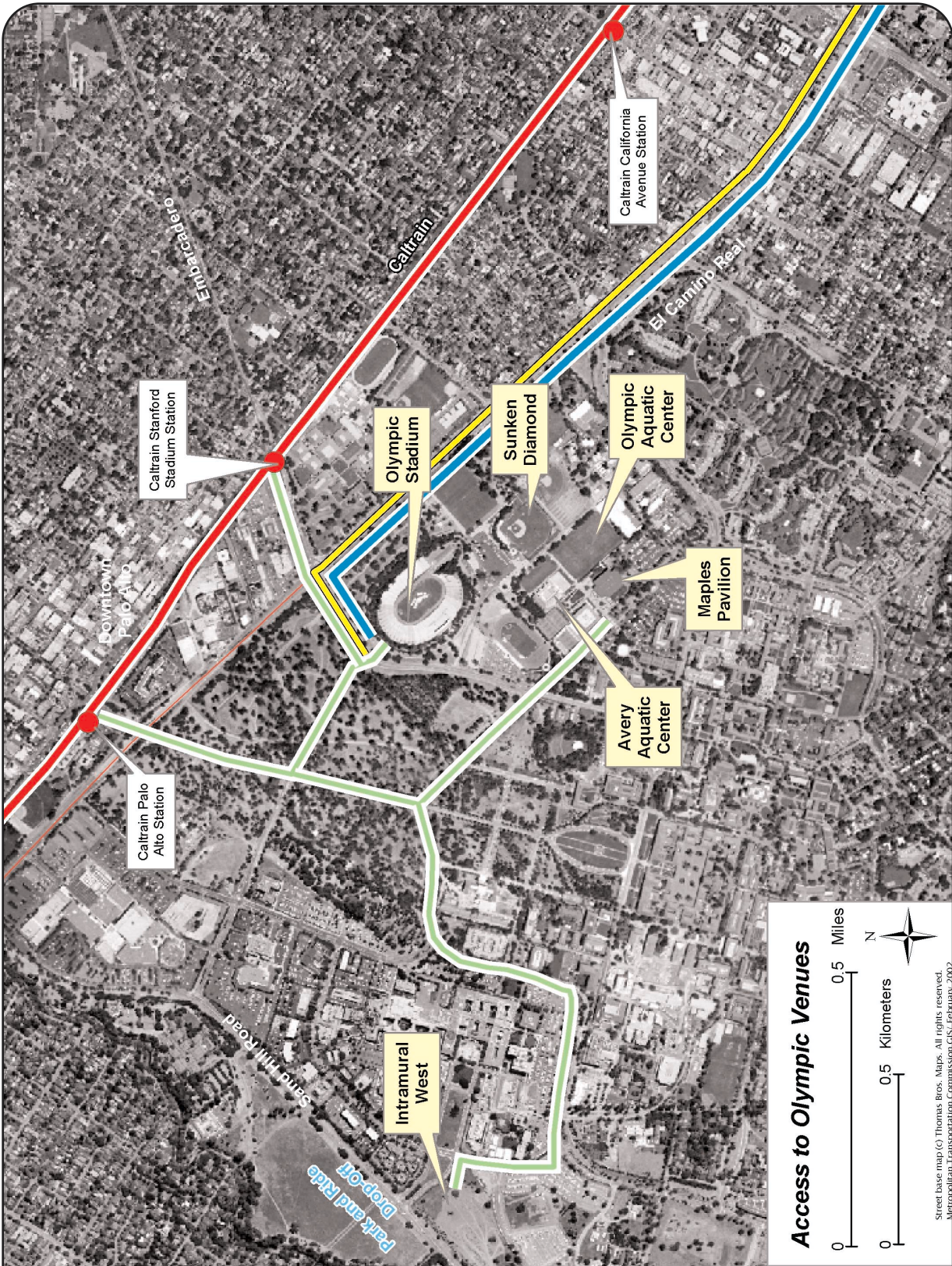
Sixth Street to I-280 S :: I-280 Olympic Lane :: Page Mill Road :: El Camino Real to University

Existing Special Events Transportation Plan

Yes

Attended Bike Parking at Venues

Yes



Venue Cluster: Stanford University

See legend above

Venue: George Haines International Swim Center

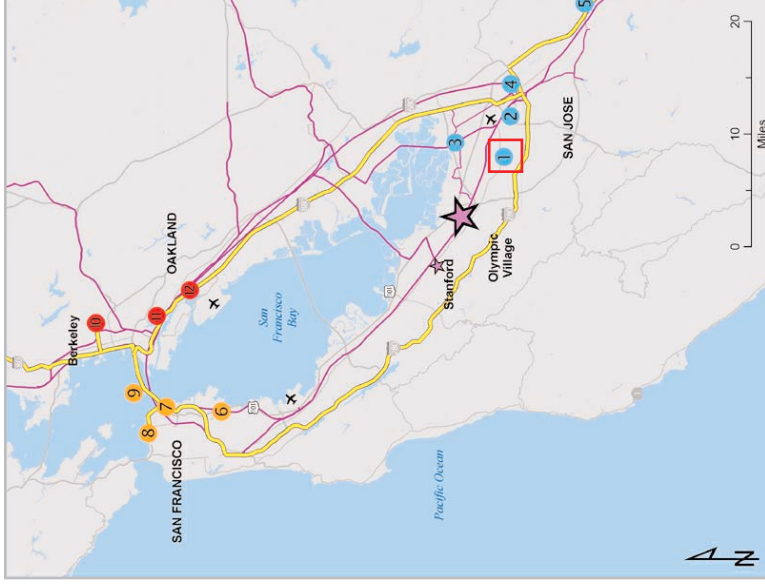


Venue:
George Haines International Swim Center

Sports:
Water Polo – Primary
Water Polo – Secondary

Transportation Corridor:
Peninsula

Access to Olympic Venues



Legend

- Olympic Family Access
- Spectator Shuttle Access
- Spectator Walk Access
- Freeway
- Highway
- Existing Rail Transit Line
- Proposed Rail Transit Line
- Rail Transit Station

Spectator Transportation System:

Caltrain:

Caltrain to the Lawrence Station :: Shuttle to Swim Center

VTA:

State Route 22 Bus Rapid Transit to venue
Park-n-Ride with shuttle access

Olympic Family Transportation

(All athlete and official vehicles are proposed to be under CHP escort)

Access from Village:

I-280 Olympic Lane :: Saratoga Ave. :: Homestead Road to Swim Center

Access from downtown San Francisco:

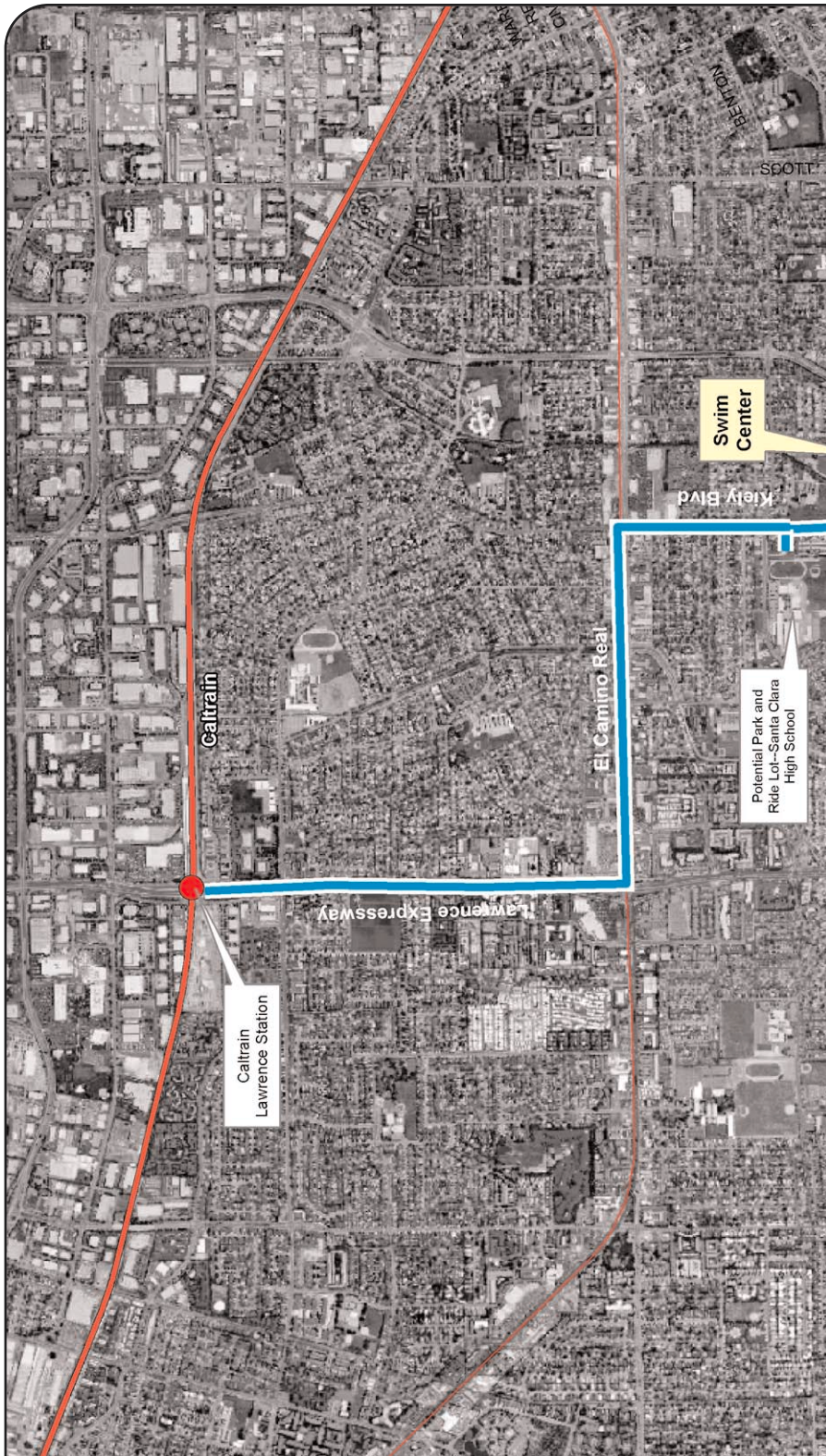
Sixth Street to I-280 :: I-280 Olympic Lane :: Saratoga Ave. :: Homestead Road to Swim Center

Existing Special Events Transportation Plan

No

Attended Bike Parking at Venues

Yes



Venue:
George Haines International Swim Center

See legend above

Venue Cluster: Santa Clara University



Venues:

Buck Shaw Stadium
Leavey Center

Sports:

Buck Shaw Stadium
Baseball – Secondary
Leavey Center
Basketball

Transportation Corridor:

Peninsula

Access to Olympic Venues



Spectator Transportation System:
Santa Clara Caltrain Station :: Walk or bike access from station

Park-n-Ride with shuttle access

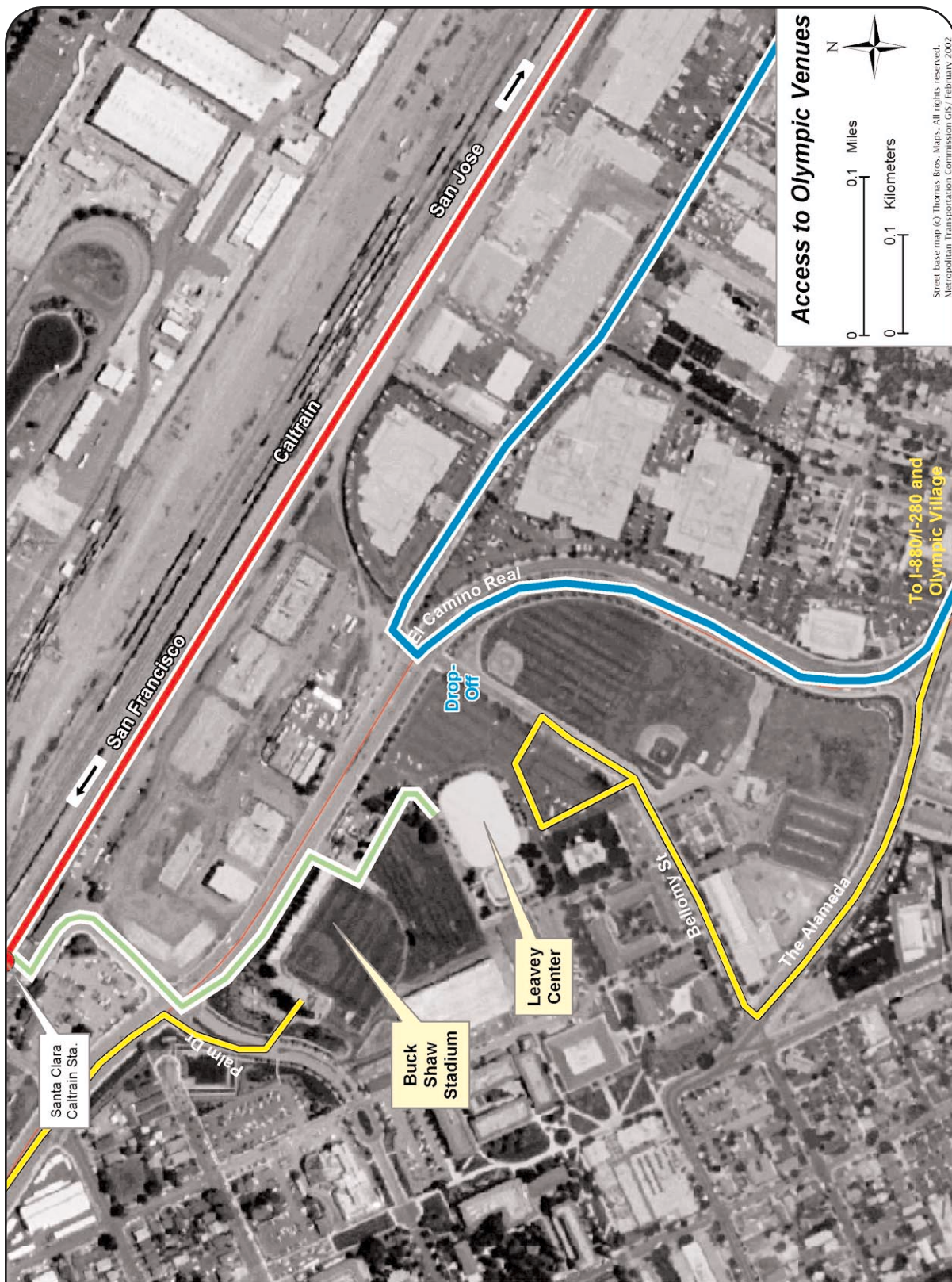
Olympic Family Transportation
(All athlete and official vehicles are proposed to be under CHP escort)

Access from Village:
I-280 Olympic Lane :: I-880 :: The Alameda to venues

Access from downtown San Francisco:
Sixth Street to I-280 S :: I-280 Olympic Lane :: I-880 :: The Alameda to venues

Existing Special Events Transportation Plan
No

Attended Bike Parking at Venues
Yes



Venue Cluster: Santa Clara University

See legend above

Venue: Olympic Velodrome

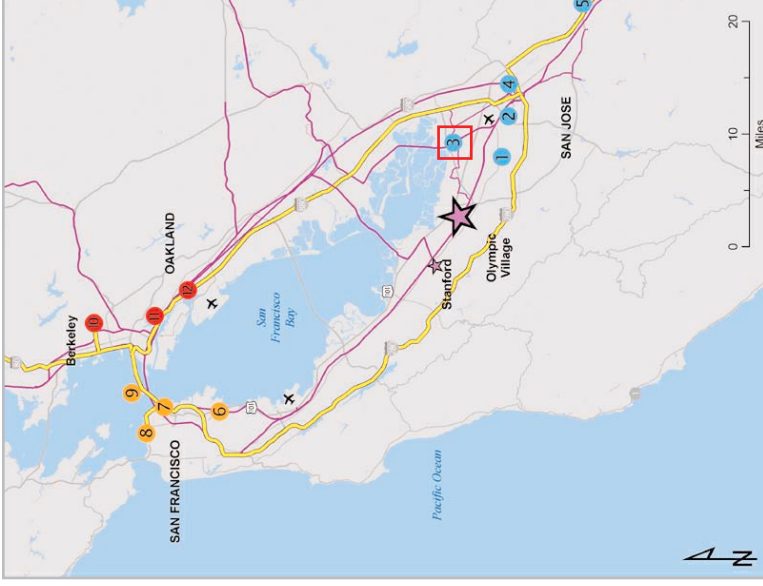
Access to Olympic Venues



Venue:
Olympic Velodrome

Sports:
Cycling – Track

Transportation Corridor:
Peninsula



Legend

- Olympic Family Access
- Spectator Shuttle Access
- Spectator Walk Access
- Freeway
- Highway
- - - Existing Rail Transit Line
- - - Proposed Rail Transit Line
- Rail Transit Station

Spectator Transportation System:
Capitol Corridor/Altamont Commuter Express to Great America Station

VTA Light Rail to Great America Station

Park-n-Ride with shuttle access

Olympic Family Transportation
(All athlete and official vehicles are proposed to be under CHP escort)

Access from Village:
US 101 :: State Route 237 to Santa Clara Velodrome

Access from downtown San Francisco:
Sixth Street :: I-280 :: State Route 85 :: State Route 237 to Santa Clara Velodrome

Existing Special Events Transportation Plan
No

Attended Bike Parking at Venues
Yes



Venue:
 Santa Clara Velodrome

See legend above

Venue Cluster: Downtown San Jose

Access to Olympic Venues



Venues:

Compaq Center at San Jose
San Jose Convention Center

Sports:

Compaq Center at San Jose
Gymnastics – Artistic
Gymnastics – Rhythmic
Gymnastics – Trampoline
San Jose Convention Center
Wrestling – Freestyle
Wrestling – Greco-Roman
Judo

Transportation Corridor:

Downtown San Jose



Legend

- Olympic Family Access
- Spectator Shuttle Access
- Spectator Walk Access
- Freeway
- Highway
- Existing Rail Transit Line
- - - Proposed Rail Transit Line
- Rail Transit Station

Spectator Transportation System:

Caltrain, Capitol Corridor, Altamont Commuter Express, BART and VTA Light Rail Stations:
Diridon Station (Caltrain, VTA Light Rail, Capitol Corridor, Altamont Commuter Express)
Convention Center Station (VTA)
San Jose Arena (BART)

Venue Access:

Compaq Center at San Jose: Walk access from BART San Jose Arena Station and Diridon Station

San Jose Convention Center: Walk access from Convention Center Station and BART San Jose Arena Station and Diridon Station

Olympic Family Transportation

(All athlete and official vehicles are proposed to be under CHP escort)

Access from Village:
I-280 Olympic Lane

For San Jose Convention Center:
Exit Woz Way :: Almaden Blvd. to venue

Access from downtown San Francisco:
Exit Woz Way :: Almaden Blvd. to venue

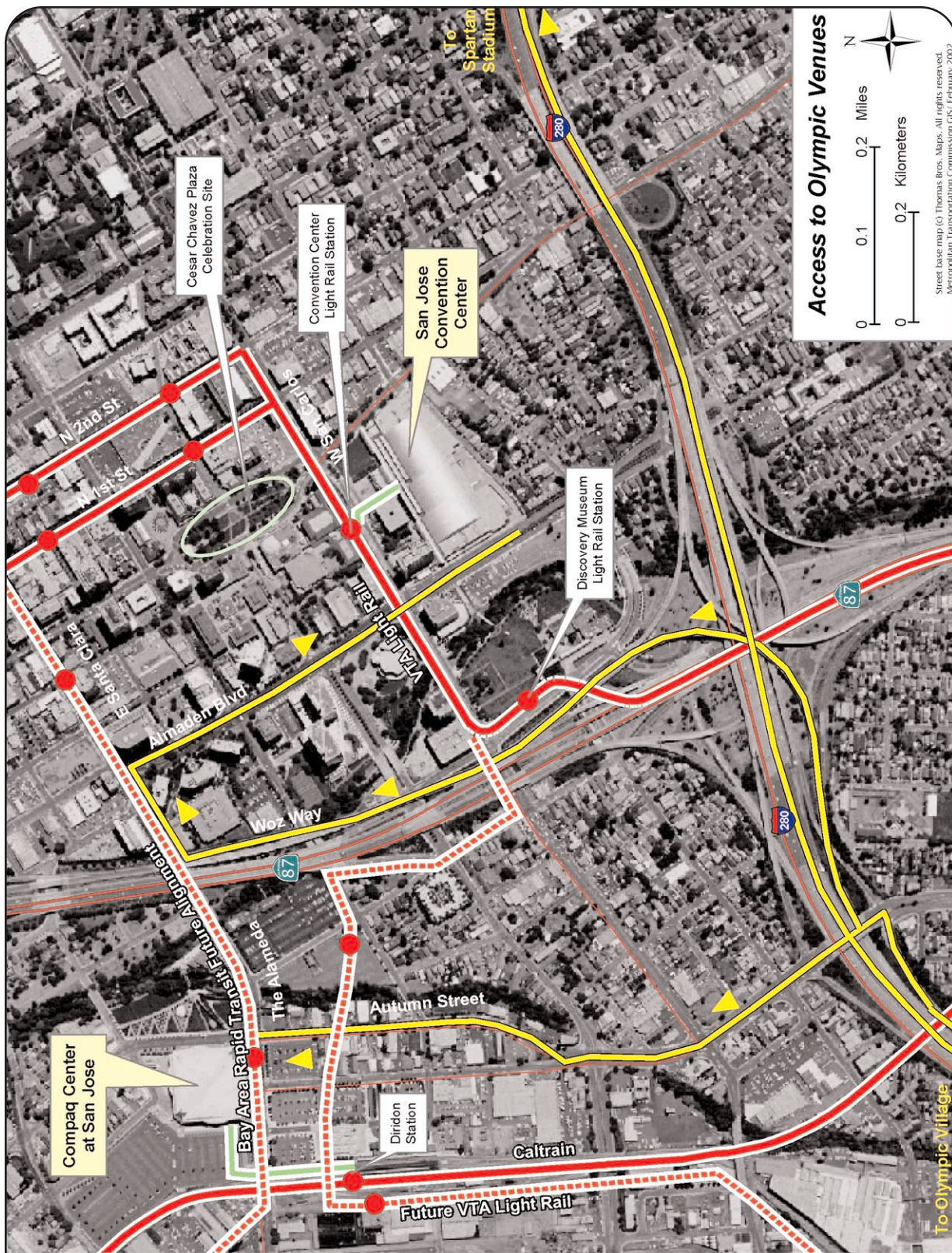
For the San Jose Arena:
I-280 Olympic Lane :: S. Montgomery to venue

Existing Special Events Transportation Plan

Yes

Attended Bike Parking at Venues

Yes



Venue Cluster: Downtown San Jose

See legend above

Venue Cluster: San Jose State University



Venues:

Spartan Stadium
SJSU Tennis Center

Sports:

Hockey – Primary
Hockey – Secondary
Tennis

Transportation Corridor:

Downtown San Jose

Access to Olympic Venues



Legend

- Olympic Family Access
- Spectator Shuttle Access
- Spectator Walk Access
- Freeway
- Highway
- Existing Rail Transit Line
- - - Proposed Rail Transit Line
- Rail Transit Station

Spectator Transportation System:
Caltrain and VTA Light Rail Stations:
Tamien Joint Intermodal Station (Caltrain and VTA)

Venue Access:
Bus Shuttle on W. Alma Ave. to venue
Park-n-Ride with shuttle access

Olympic Family Transportation

(All athlete and official vehicles are proposed to be under CHP escort)

Access from Village:

I-280 Olympic Lane :: 10th Street to Spartan Stadium

Access from downtown San Francisco:

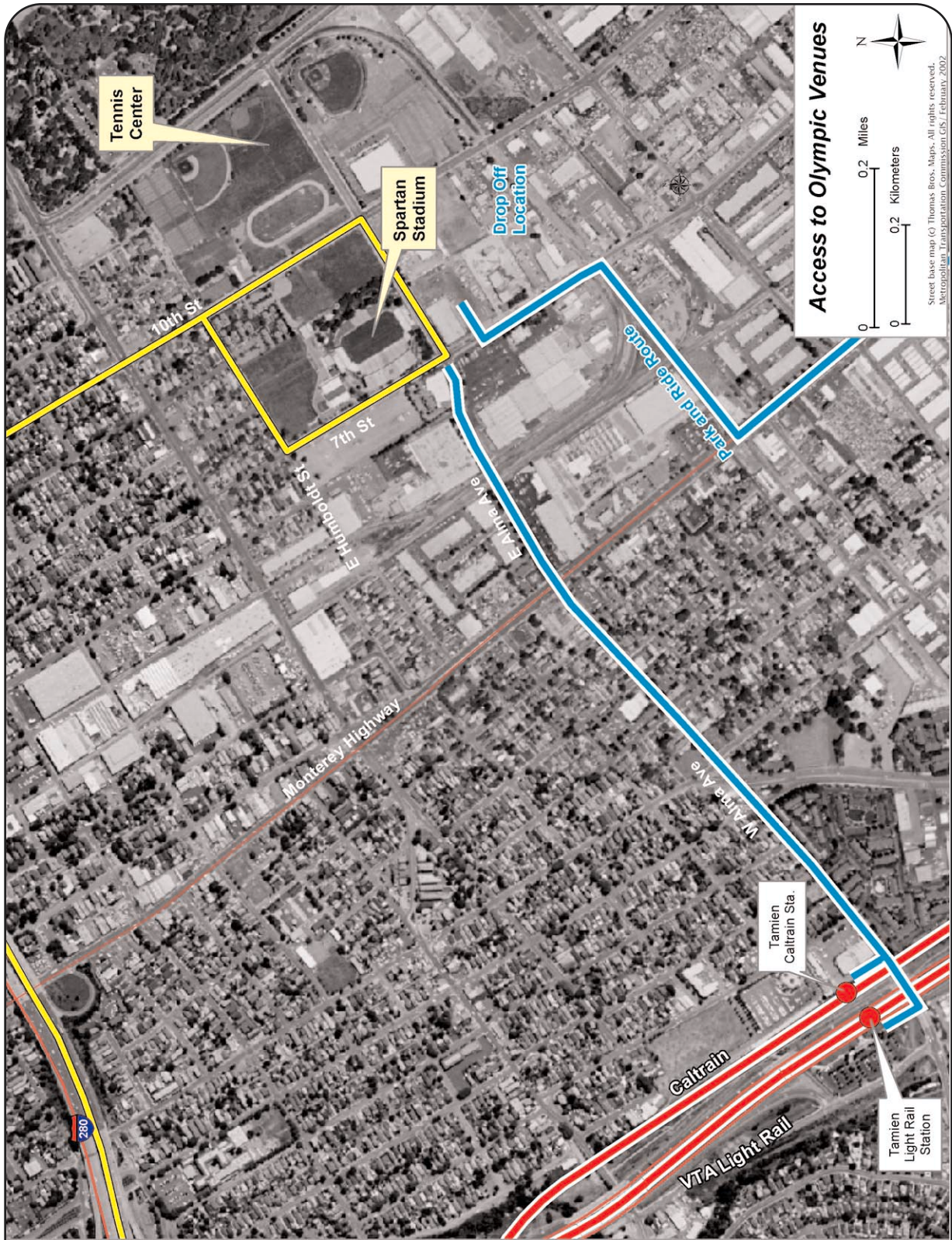
Sixth Street to I-280 S :: I-280 Olympic Lane :: 10th Street to Spartan Stadium

Existing Special Events Transportation Plan

Yes

Attended Bike Parking at Venues

Yes



Venue Cluster:
San Jose State University

See legend above

Venue: San Jose Shooting Center

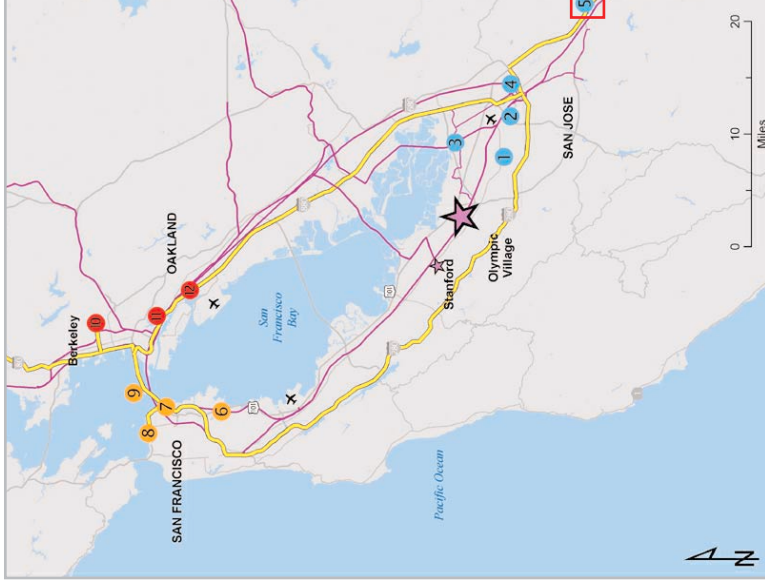


Venue:
San Jose Shooting Center

Sports:
Shooting

Transportation Corridor:
South Bay

Access to Olympic Venues



Legend

- Olympic Family Access
- Spectator Shuttle Access
- Spectator Walk Access
- Freeway
- Highway
- Existing Rail Transit Line
- Proposed Rail Transit Line
- Rail Transit Station

Spectator Transportation System:
Caltrain:
 Blossom Hill Station with shuttle
 Park-n-Ride with shuttle access

Olympic Family Transportation
 (All athlete and official vehicles are proposed to be under CHP escort)
Access from Village:
 US 101 South :: Monterey Highway :: Metcalf Road :: Malech Road to Shooting Center
Access from downtown San Francisco:
 Sixth Street to I-280 :: I-280 Olympic Lane :: State Route 85 :: Monterey Highway :: Metcalf Road :: Malech Road to Shooting Center

Venue Cluster: Bayshore

Access to Olympic Venues



Venues:

Cow Palace
Candlestick Park

Sports:

Cow Palace
Boxing
3Com Park
Football – Regional 1

Transportation Corridor:

Peninsula



Legend

- Olympic Family Access
- Spectator Shuttle Access
- Spectator Walk Access
- Freeway
- Highway
- - - Existing Rail Transit Line
- - - Proposed Rail Transit Line
- Rail Transit Station

Spectator Transportation System:

Caltrain and SF Muni Stations:

Bayshore Intermodal Transportation Center :: Bus shuttle from station to venues

Olympic Family Transportation

(All athlete and official vehicles are proposed to be under CHP escort)

Access from Village:

Cow Palace :: I-280 to Geneva :: Exit Geneva to venues

Access from downtown San Francisco:

6th Street to I-280 S :: Geneva exit to venues

For Village and Downtown SF:

Candlestick Park :: I-280 :: I-380 :: US 101 to 3 Com Exit

Existing Special Events Transportation Plan

TBD

Attended Bike Parking at Venues

Yes



Venue Cluster: Bayshore

See legend above

Venue Cluster: Downtown San Francisco



Venues:

PacBell Park
 Moscone Convention Center
 Embarcadero Waterfront
 International Olympic Committee Hotel
 United States Olympic Committee Hotel

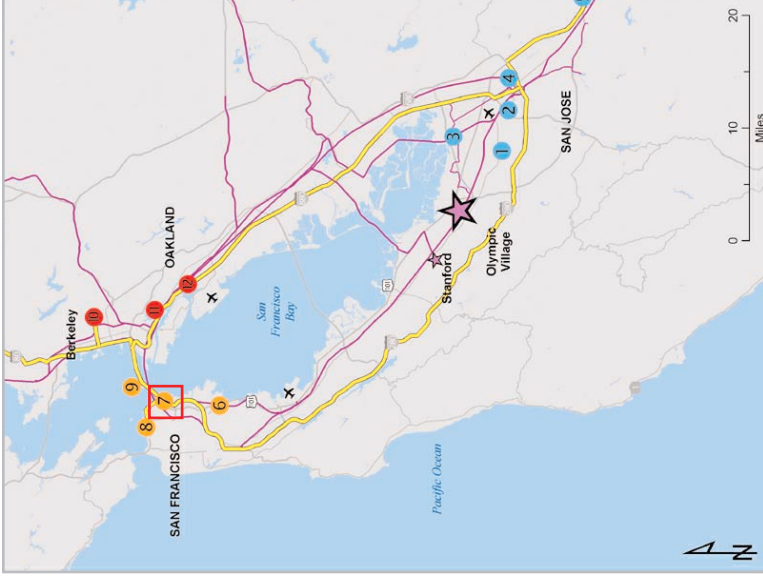
Sports:

Pac Bell Park
 Baseball – Primary
Moscone West
 Handball – Primary
 Table Tennis
 Taekwondo
Moscone South
 Main Press Center

Transportation Corridor:

Peninsula

Access to Olympic Venues



Legend

- Olympic Family Access
- Spectator Shuttle Access
- Spectator Walk Access
- Freeway
- Highway
- Existing Rail Transit Line
- - - Proposed Rail Transit Line
- Rail Transit Station

Spectator Transportation System:

BART, Caltrain, regional bus operators, and SF Muni

Montgomery BART/Muni Station:

PacBell Park, Moscone Convention Center, IOC Hotel, USOC Hotel

Embarcadero BART/Muni Station:

Embarcadero Waterfront

Caltrain 4th and Townsend:

PacBell Park
 Embarcadero Waterfront

Transbay Bus Terminal:

All venues

Olympic Family Transportation

(All athlete and official vehicles are proposed to be under CHP escort)

Access from Village:

I-280 N to end of freeway

For Moscone, USOC and IOC:

Exit Sixth Street to Harrison :: Third Street to venue

For Embarcadero and PacBell Park:

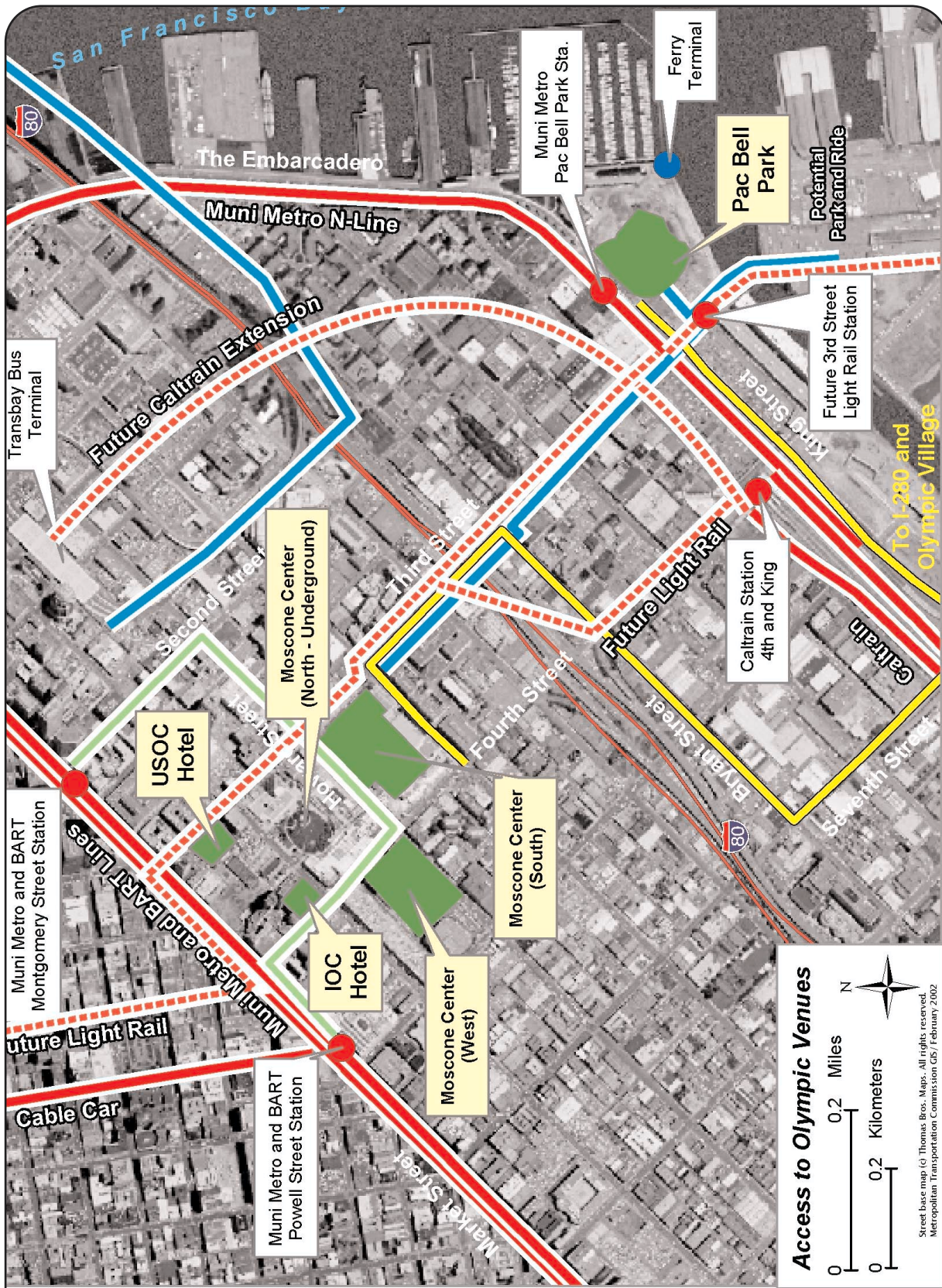
Exit on Montgomery to venues

Existing Special Events Transportation Plan

Yes for all locations

Attended Bike Parking at Venues

Yes



Venue Cluster: Downtown San Francisco

See legend above

Venue Cluster: Aquatic Park and The Marina Green



Venues:

Aquatic Park
Marina Green

Sports:

Aquatic Park
Triathlon
Marina Green
Cycling – Road

Transportation Corridor:

San Francisco

Access to Olympic Venues



Legend

- Olympic Family Access
- Spectator Shuttle Access
- Spectator Walk Access
- Freeway
- Highway
- Existing Rail Transit Line
- - - Proposed Rail Transit Line
- Rail Transit Station

Spectator Transportation System:
BART and San Francisco Muni:
 Spectators will be shuttled from the Civic Center BART/SF Muni station and the Van Ness SF Muni Metro Station.

Venue Access from stations:
 Shuttle to waterfront via Van Ness to Bay Street

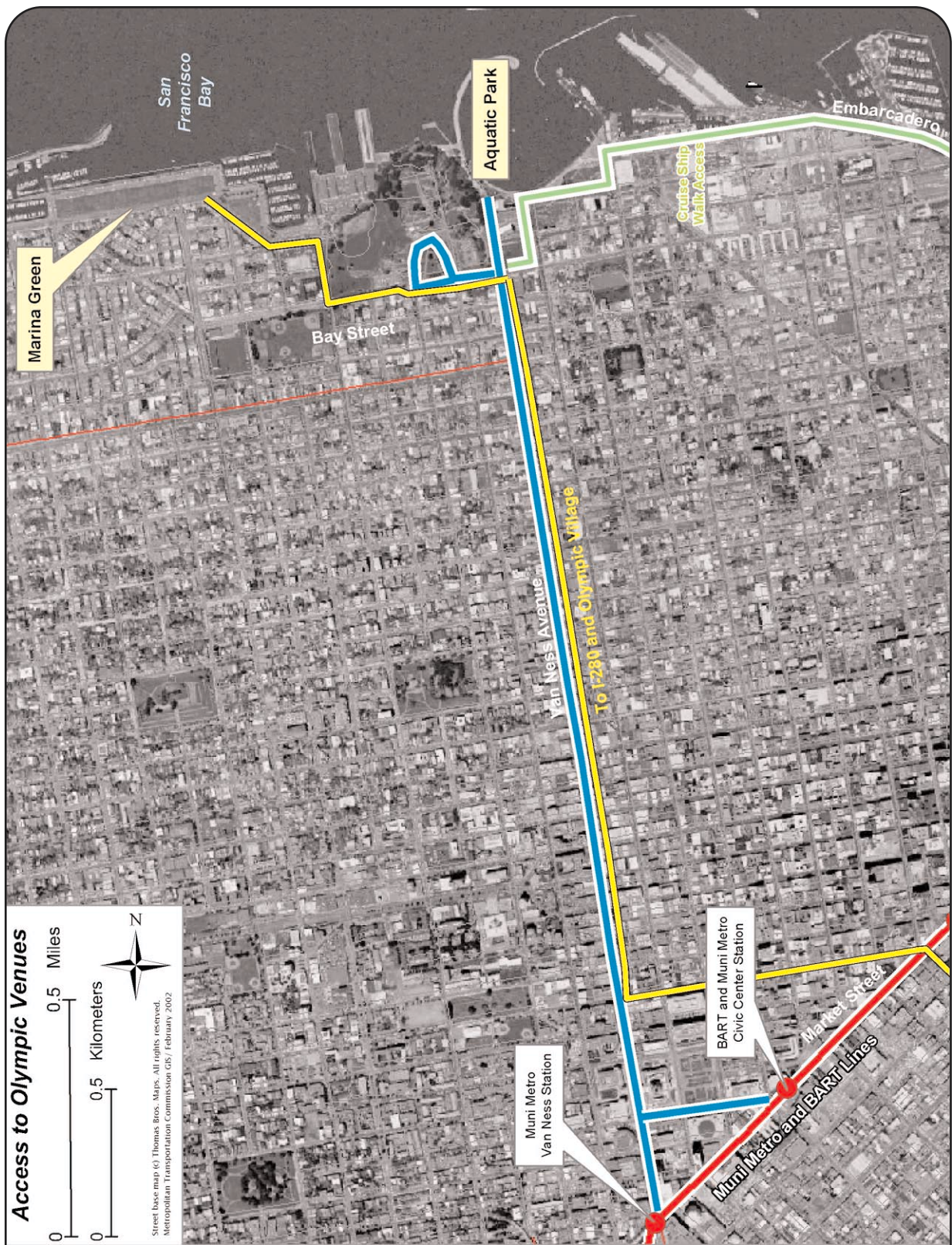
Olympic Family Transportation
 (All athlete and official vehicles are proposed to be under CHP escort)

Access from Village:
 I-280 to Sixth Street :: Taylor Street :: Turk Street :: Van Ness :: Bay Street to venues

Access from downtown San Francisco:
 Geary to Van Ness :: Bay Street to venues

Existing Special Events Transportation Plan
 No

Attended Bike Parking at Venues
 Yes



Venue Cluster: Aquatic Park and The Marina Green

See legend above

Venue: Treasure Island



Venue:
Treasure Island

Sports:
Sailing – Sailing Center

Transportation Corridor:
Transbay

Access to Olympic Venues



Spectator Transportation System:

Spectators will be shuttled from the West Oakland BART station and the Transbay Bus Terminal to Treasure Island.

BART, SF Muni, ferry operators, and AC Transit Stations

In San Francisco:

Transbay Bus Terminal with direct access to I-80 Ferry Terminal on the Embarcadero

In the East Bay:

West Oakland BART station

Venue Access from bus drop off location:
Walk access

Olympic Family Transportation

(All athlete and official vehicles are proposed to be under CHP escort)

Access from Village:

I-280 :: US 101 :: I-80/Bay Bridge to Treasure Island Exit

Access from downtown San Francisco:

I-80 Bay Bridge to Treasure Island

Ferry services from Ferry Building to Treasure Island

Existing Special Events Transportation Plan

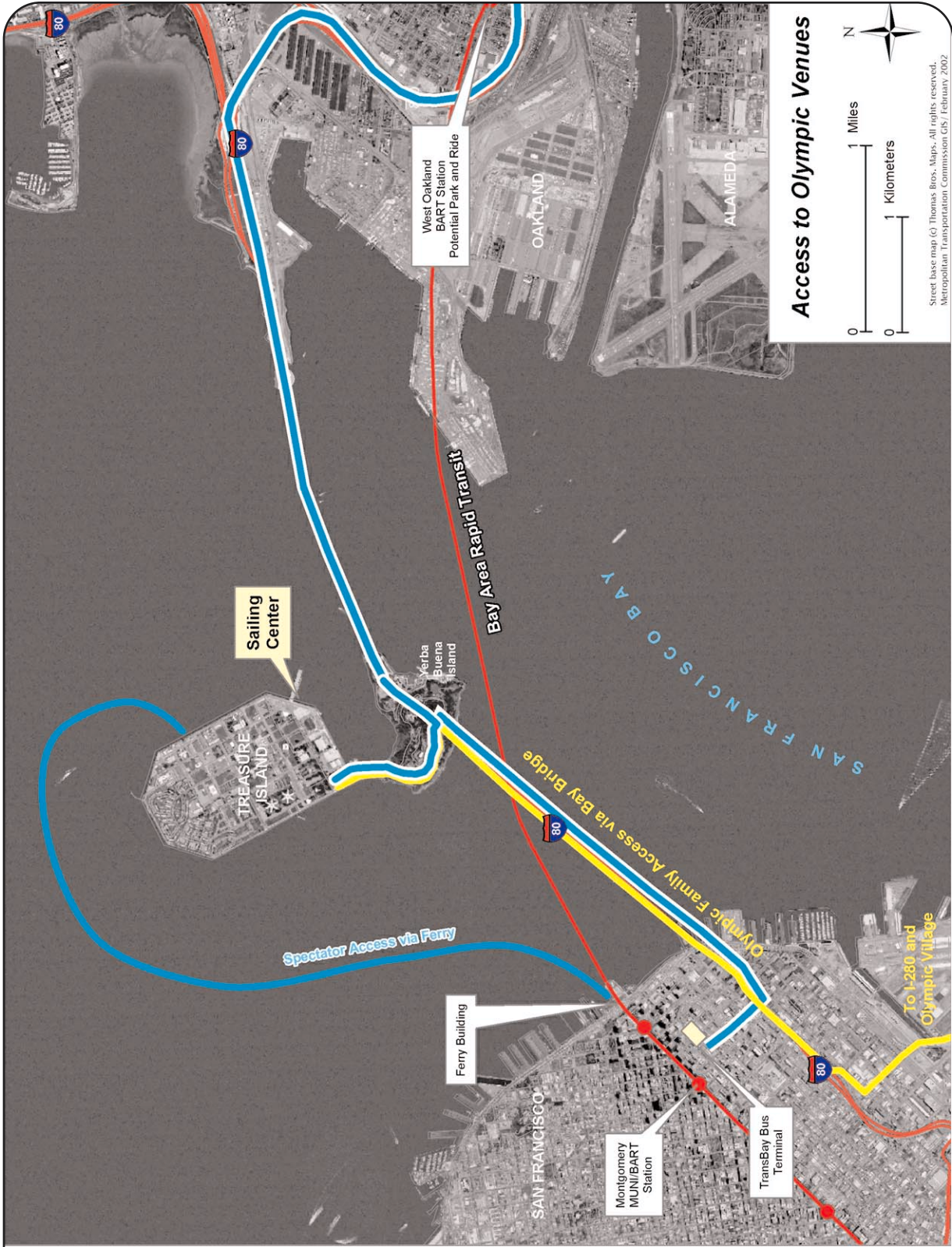
Under development for Treasure Island Triathlon

Attended Bike Parking at Venues

No

Legend

- Olympic Family Access
- Spectator Shuttle Access
- Spectator Walk Access
- Freeway
- Highway
- Existing Rail Transit Line
- Proposed Rail Transit Line
- Rail Transit Station



Venue:
Treasure Island

See legend above

Venue Cluster: University of California at Berkeley



Venues:

- Haas Pavilion
- Memorial Stadium
- Edwards Field

Sports:

- Memorial Stadium**
- Football – Regional 2
- Edwards Stadium**
- Volleyball – Beach
- Haas Pavilion**
- Volleyball – Primary
- Berkeley Recreation Center**
- Volleyball – Secondary

Transportation Corridor:

- Transbay – North

Access to Olympic Venues



Legend

- Olympic Family Access
- Spectator Shuttle Access
- Spectator Walk Access
- Freeway
- Highway
- Existing Rail Transit Line
- Proposed Rail Transit Line
- Rail Transit Station

Spectator Transportation System:

Bay Area Rapid Transit Stations:

- Berkeley
- North Berkeley
- Rockridge

Venue Access from BART:

- Berkeley BART: Walk access
- North Berkeley/Rockridge : AC Transit shuttle
- Park-n-Ride with shuttle access

Olympic Family Transportation

(All athlete and official vehicles are proposed to be under CHP escort)

Access from Village:

US 101 :: State Route 92 :: I-880 Olympic Lane
:: I-80 :: University Avenue to venues

Access from downtown San Francisco:

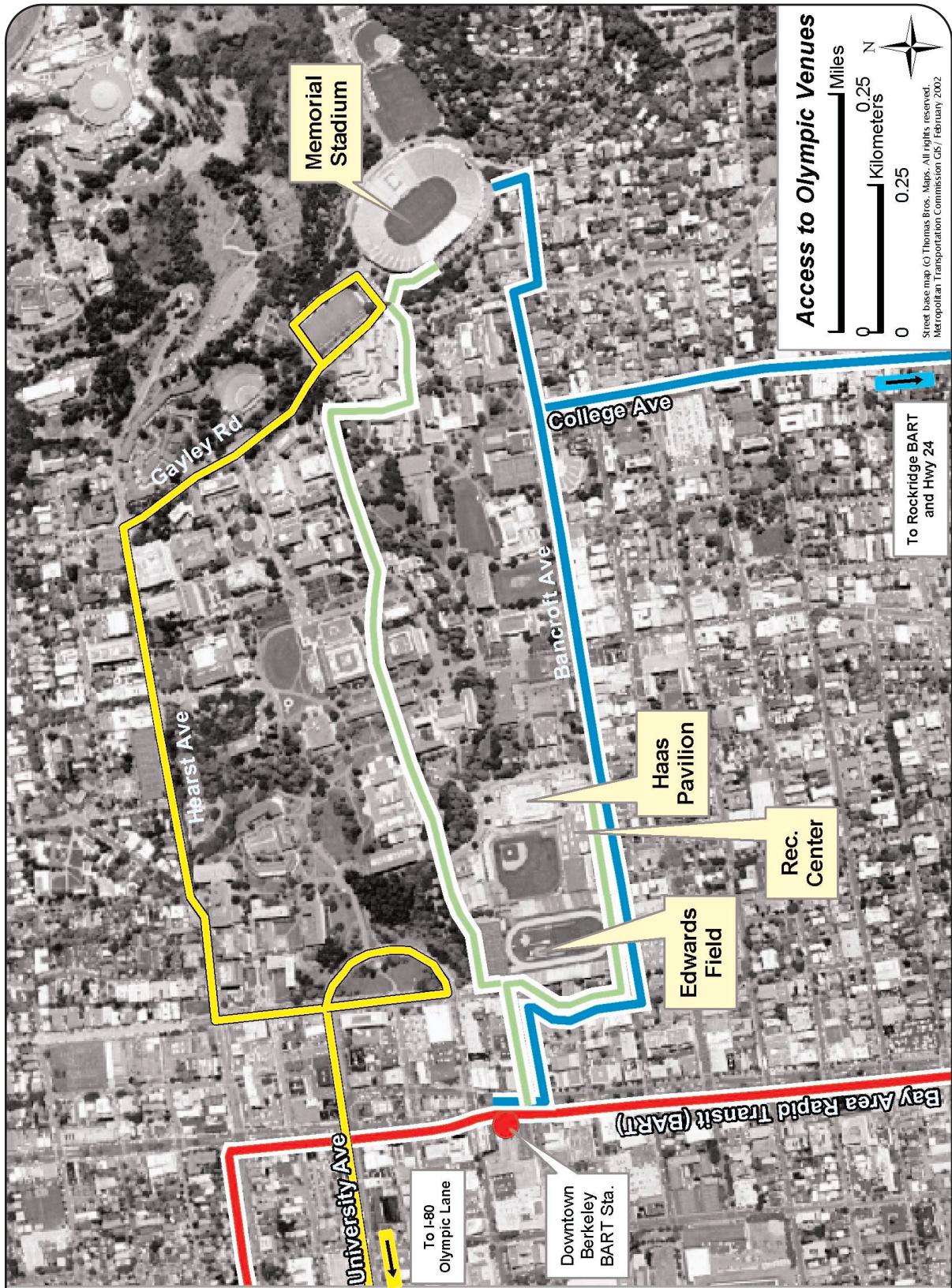
Bay Bridge to I-80 Olympic Lane :: University to venues

Existing Special Events Transportation Plan

Yes for all venues

Attended Bike Parking at Venues

Yes



Venue Cluster:
University of California at Berkeley

See legend above

Venue: Kaiser Auditorium

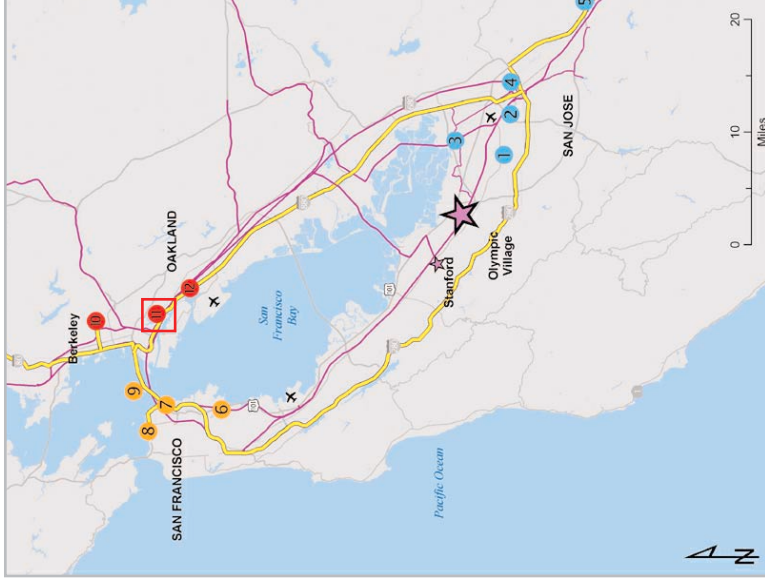
Access to Olympic Venues



Venue:
Kaiser Auditorium

Sports:
Weightlifting

Transportation Corridor:
Transbay – South



Legend

- Olympic Family Access
- Spectator Shuttle Access
- Spectator Walk Access
- Freeway
- Highway
- Existing Rail Transit Line
- Proposed Rail Transit Line
- Rail Transit Station

Spectator Transportation System:

Bay Area Rapid Transit Stations:

Lake Merritt BART Station
12th Street City Center

Venue Access from BART:

Lake Merritt - Walk access
12th Street City Center - AC Transit shuttle service

Olympic Family Transportation

(All athlete and official vehicles are proposed to be under CHP escort)

Access from Village:

US 101 :: State Route 92 :: I-880 Olympic Lane
:: Oak Street :: 10th Street to venue

Access from downtown San Francisco:

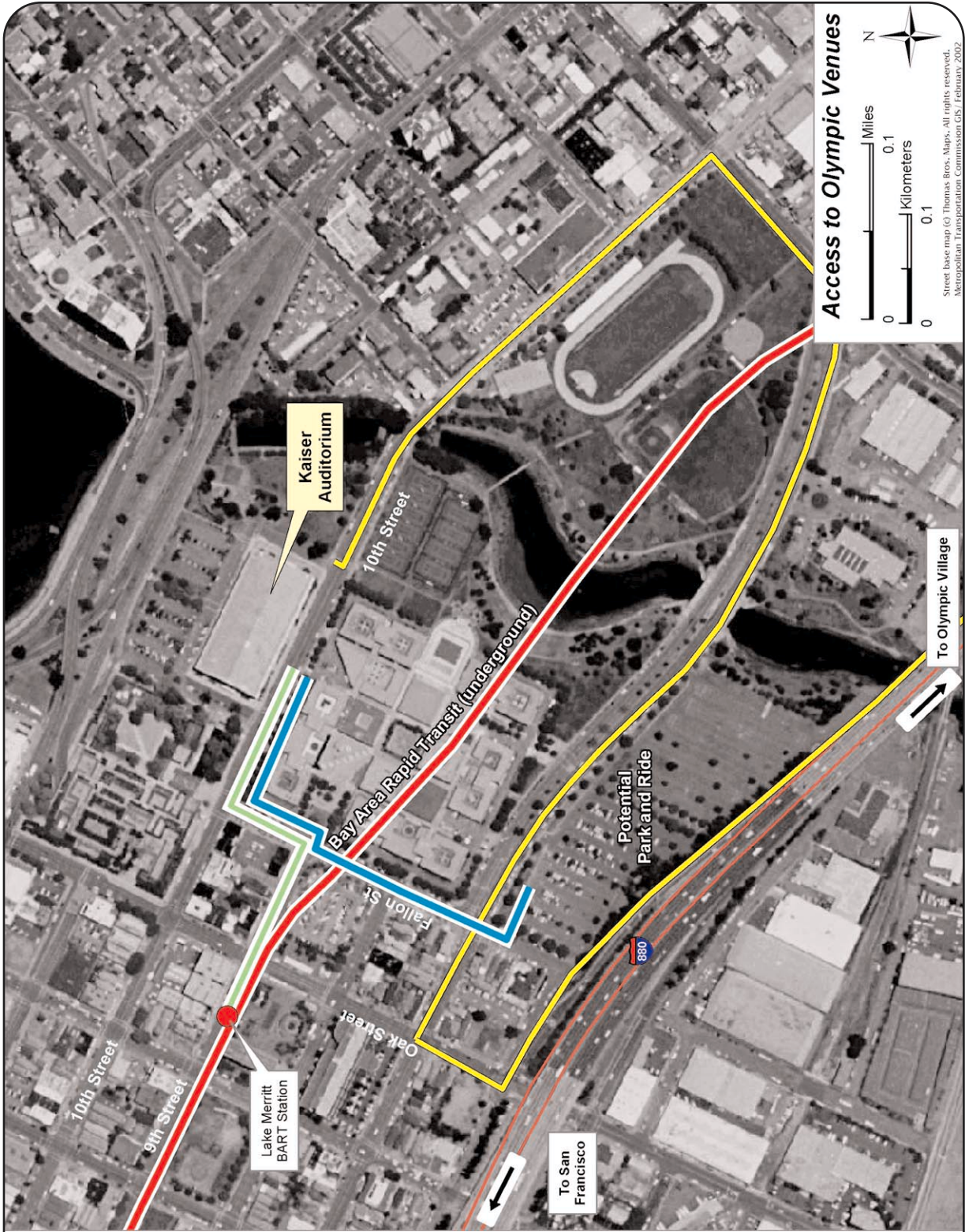
I-80 Bay Bridge to I-880 :: Exit Jackson :: Oak ::
10th Street to venue

Existing Special Events Transportation Plan

No

Attended Bike Parking at Venues

Yes



Venue:
Kaiser Auditorium

See legend above

Venue Cluster:

Network Associates Coliseum and the Oakland Arena



Venues:

Oakland Arena
Network Associates Coliseum

Sports:

Oakland Arena
Basketball – Primary
Handball – Finals
Network Associates Coliseum
Football

Transportation Corridor:

Transbay – South

Access to Olympic Venues



Legend

- Olympic Family Access
- Spectator Shuttle Access
- Spectator Walk Access
- Freeway
- Highway
- Existing Rail Transit Line
- - - Proposed Rail Transit Line
- Rail Transit Station

Spectator Transportation System:

BART and Capitol Corridor Stations:
Coliseum Intermodal Station (BART, Capitol Corridor)

Venue Access from BART:

Walk access
Park-n-Ride with shuttle access.

Olympic Family Transportation

(All athlete and official vehicles are proposed to be under CHP escort)

Access from Village:

US 101 :: State Route 92 :: I-880 Olympic Lane
:: Hegenberger Exit to venue

Access from downtown San Francisco:

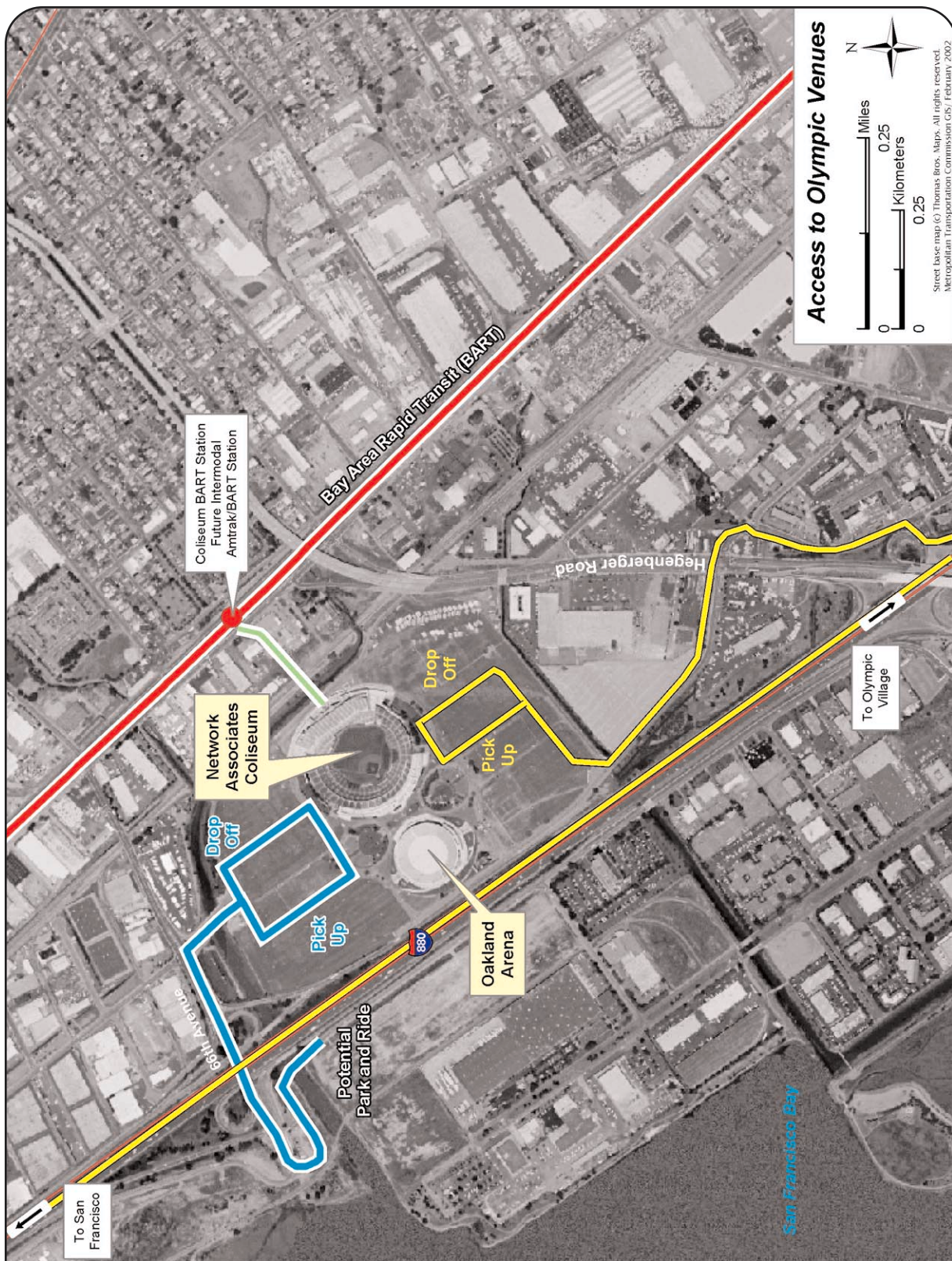
Bay Bridge :: I-880 :: Hegenberger Exit to venue

Existing Special Events Transportation Plan

Yes

Attended Bike Parking at Venues

Yes



Venue Cluster:
Network Associates Coliseum and the Oakland Arena

See legend above

Venue: Lake Natoma



Venues:
Lake Natoma

Sports:
Canoe/Kayak – Slalom
Canoe/Kayak – Sprint
Rowing

Transportation Corridor:
Sacramento Corridor

Access to Olympic Venues

Spectator Transportation System:

Capitol Corridor to Sacramento Light Rail – Folsom Extension to Lake Natoma with walk access

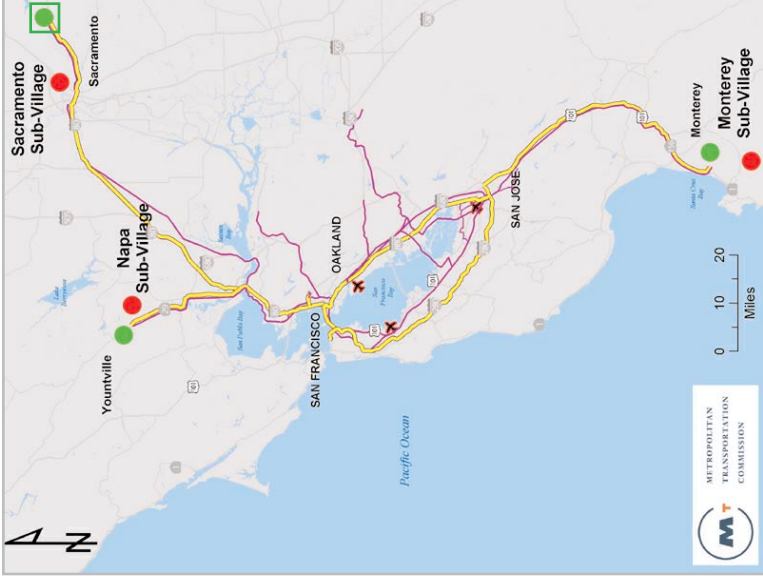
Park-n-Ride lot across from venue and at Mather Regional Park

Olympic Family Transportation

(All athlete and official vehicles are proposed to be under CHP escort)

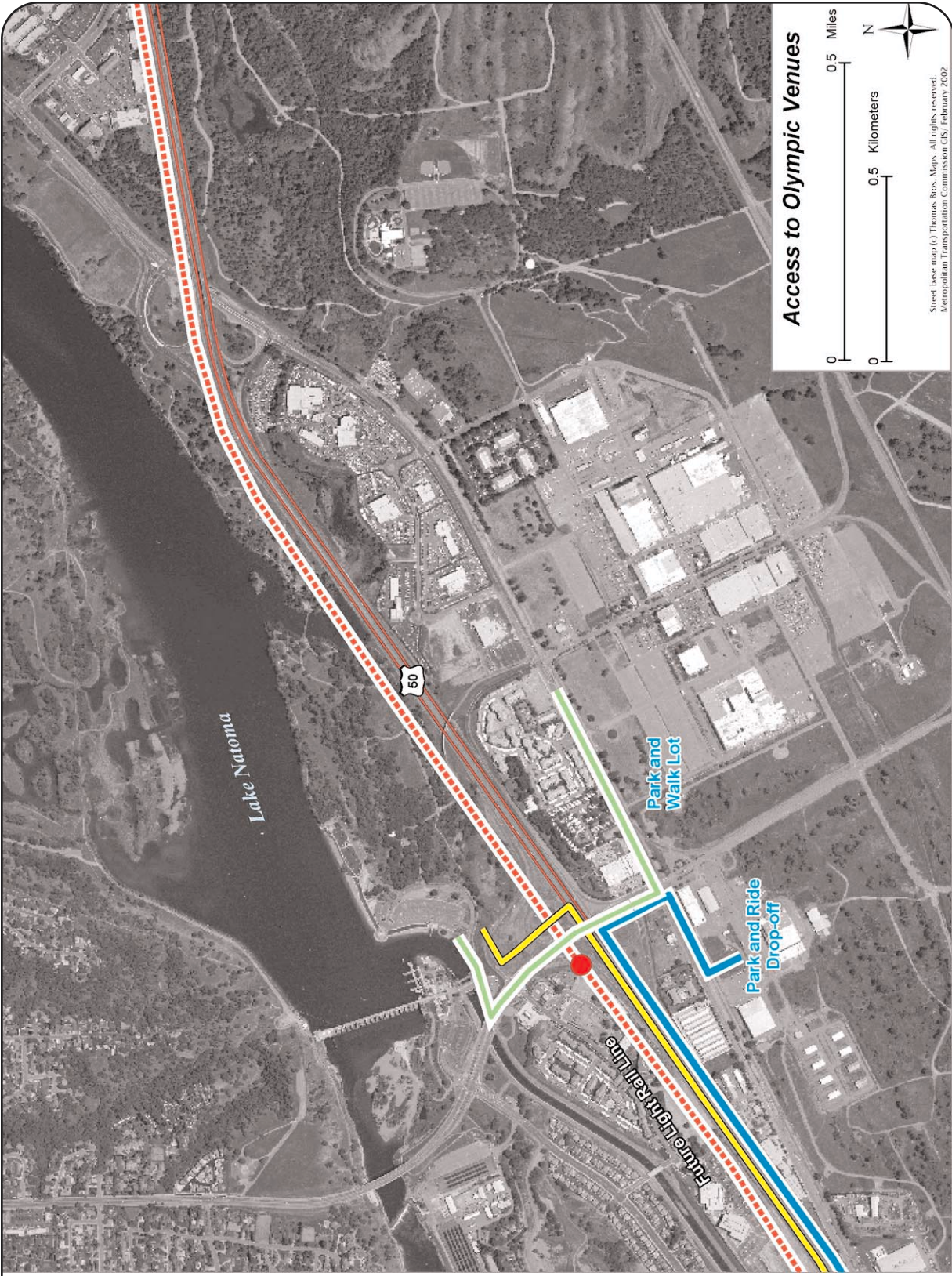
Access from Village:
I-80 to Lake Natoma

Access from downtown San Francisco:
Sixth Street :: I-280 S :: I-80 / Bay Bridge to Lake Natoma



Legend

- Olympic Family Access
- Spectator Shuttle Access
- Spectator Walk Access
- Freeway
- Highway
- Existing Rail Transit Line
- Proposed Rail Transit Line
- Rail Transit Station



See legend above

Venue: Domaine Chandon Winery



Venues:

Domaine Chandon Winery

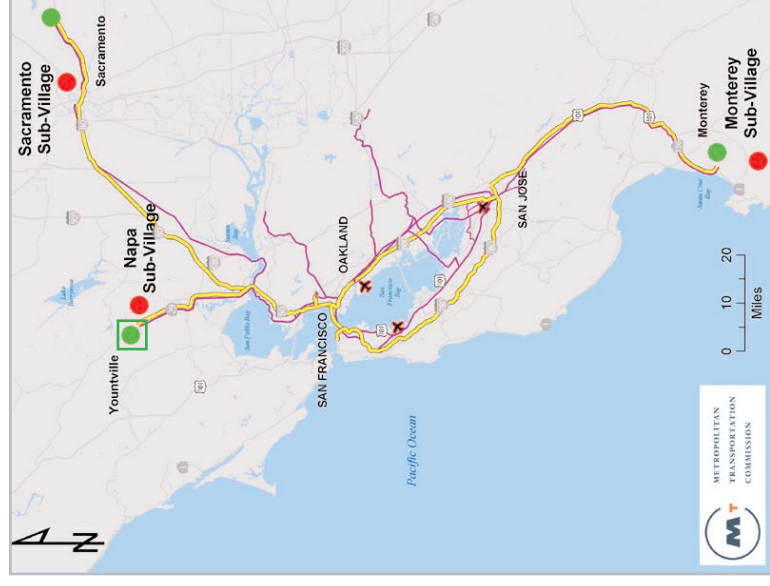
Sports:

Cycling – Mountain Bike

Transportation Corridor:

Napa

Access to Olympic Venues



Legend

- Olympic Family Access
- Spectator Shuttle Access
- Spectator Walk Access
- Freeway
- Highway
- Existing Rail Transit Line
- - - Proposed Rail Transit Line
- Rail Transit Station

Spectator Transportation System:

Park-n-Ride at Vallejo County Fairgrounds and Sears Point Raceway along with limited on-site parking at venue

Olympic Family Transportation

(All athlete and official vehicles are proposed to be under CHP escort)

Access from Village:

I-280 Olympic Lane :: I-80 / Bay Bridge to State Route 29 :: California Drive to venue

Access from downtown San Francisco:

Sixth Street to I-280 S :: I-80 / Bay Bridge to State Route 29 :: California Drive to venue

Existing Special Events Transportation Plan

Yes

Attended Bike Parking at Venues

Yes



Venue:
 Domaine Chandon Winery

See legend above

Venue: Monterey Horse Park

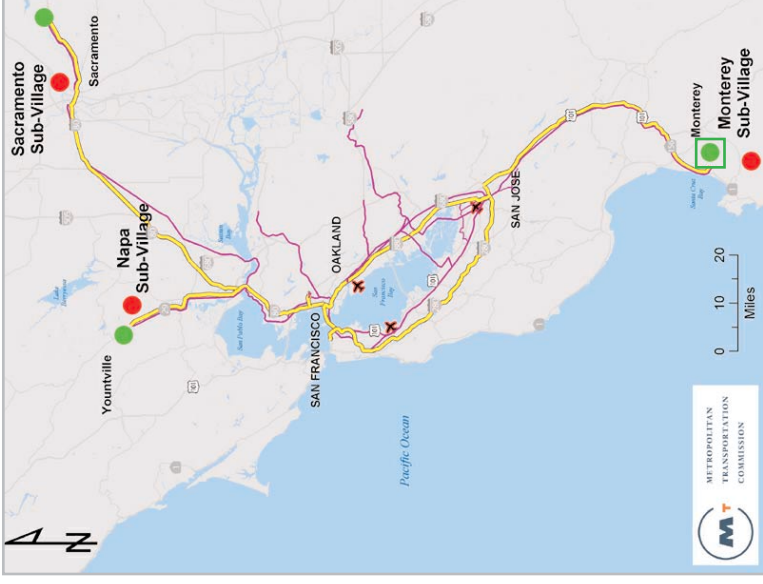


Venues:
Monterey Horse Park









Sports:
Equestrian – Dressage
Equestrian – Three-Day Event
Equestrian – Jumping

Transportation Corridor:
San Jose to Monterey

Access to Olympic Venues



Legend

-  Olympic Family Access
-  Spectator Shuttle Access
-  Spectator Walk Access
-  Freeway
-  Highway
-  Existing Rail Transit Line
-  Proposed Rail Transit Line
-  Rail Transit Station

Spectator Transportation System:
US 101 to Salinas
Park-n-Ride lots with shuttle service

Olympic Family Transportation
(All athlete and official vehicles are proposed to be under CHP escort)

Access from Village:
US 101 :: State Route 156 to Horse Park

Access from downtown San Francisco:
Sixth Street :: I-280 Olympic Lane :: US 101 ::
State Route 156 to Horse Park